

VERNON SPRINGS - MULTI-FAMILY RESIDENTIAL



ISSUED FOR DEVELOPMENT PERMIT - 2023.11.23
1607 43RD AVE. VERNON, BC



4100 12010 6 STREET
KELLOWNA, BC V1Y 1K6
TEL: 250.863.3300
www.bluegreenarchitect.com

□ KAMLOOPS
■ KELOWNA

1607 43RD AVE. VERNON, BC
VERNON SPRINGS - MULTI-FAMILY RESIDENTIAL

This drawing is the property of BlueGreen Architecture Inc. and is not to be reproduced, stored in a retrieval system, or transmitted in any form or by any means, electronic, mechanical, photocopying, recording, or by any information storage and retrieval system, without the prior written permission of BlueGreen Architecture Inc.

DATE: 2023.11.23
PROJECT: 1607 43RD AVE. VERNON, BC

CONTACT: KAMLOOPS
1006 TOWNSHIRE AVENUE
KAMLOOPS, BC V2C 1Y7
TEL: 250.863.3300

1	1607 43RD AVE. VERNON, BC	VERNON SPRINGS - MULTI-FAMILY RESIDENTIAL
2	1607 43RD AVE. VERNON, BC	VERNON SPRINGS - MULTI-FAMILY RESIDENTIAL
3	1607 43RD AVE. VERNON, BC	VERNON SPRINGS - MULTI-FAMILY RESIDENTIAL
4	1607 43RD AVE. VERNON, BC	VERNON SPRINGS - MULTI-FAMILY RESIDENTIAL

1	1607 43RD AVE. VERNON, BC	VERNON SPRINGS - MULTI-FAMILY RESIDENTIAL
2	1607 43RD AVE. VERNON, BC	VERNON SPRINGS - MULTI-FAMILY RESIDENTIAL
3	1607 43RD AVE. VERNON, BC	VERNON SPRINGS - MULTI-FAMILY RESIDENTIAL
4	1607 43RD AVE. VERNON, BC	VERNON SPRINGS - MULTI-FAMILY RESIDENTIAL

1	1607 43RD AVE. VERNON, BC	VERNON SPRINGS - MULTI-FAMILY RESIDENTIAL
2	1607 43RD AVE. VERNON, BC	VERNON SPRINGS - MULTI-FAMILY RESIDENTIAL
3	1607 43RD AVE. VERNON, BC	VERNON SPRINGS - MULTI-FAMILY RESIDENTIAL
4	1607 43RD AVE. VERNON, BC	VERNON SPRINGS - MULTI-FAMILY RESIDENTIAL

VERNON: 1607 43RD AVE. VERNON, BC

VERNON: 1607 43RD AVE. VERNON, BC

VERNON: 1607 43RD AVE. VERNON, BC

VERNON: 1607 43RD AVE. VERNON, BC

VERNON: 1607 43RD AVE. VERNON, BC

VERNON: 1607 43RD AVE. VERNON, BC

VERNON: 1607 43RD AVE. VERNON, BC

VERNON: 1607 43RD AVE. VERNON, BC

VERNON: 1607 43RD AVE. VERNON, BC

ATTACHMENT 2



NOT FOR CONSTRUCTION

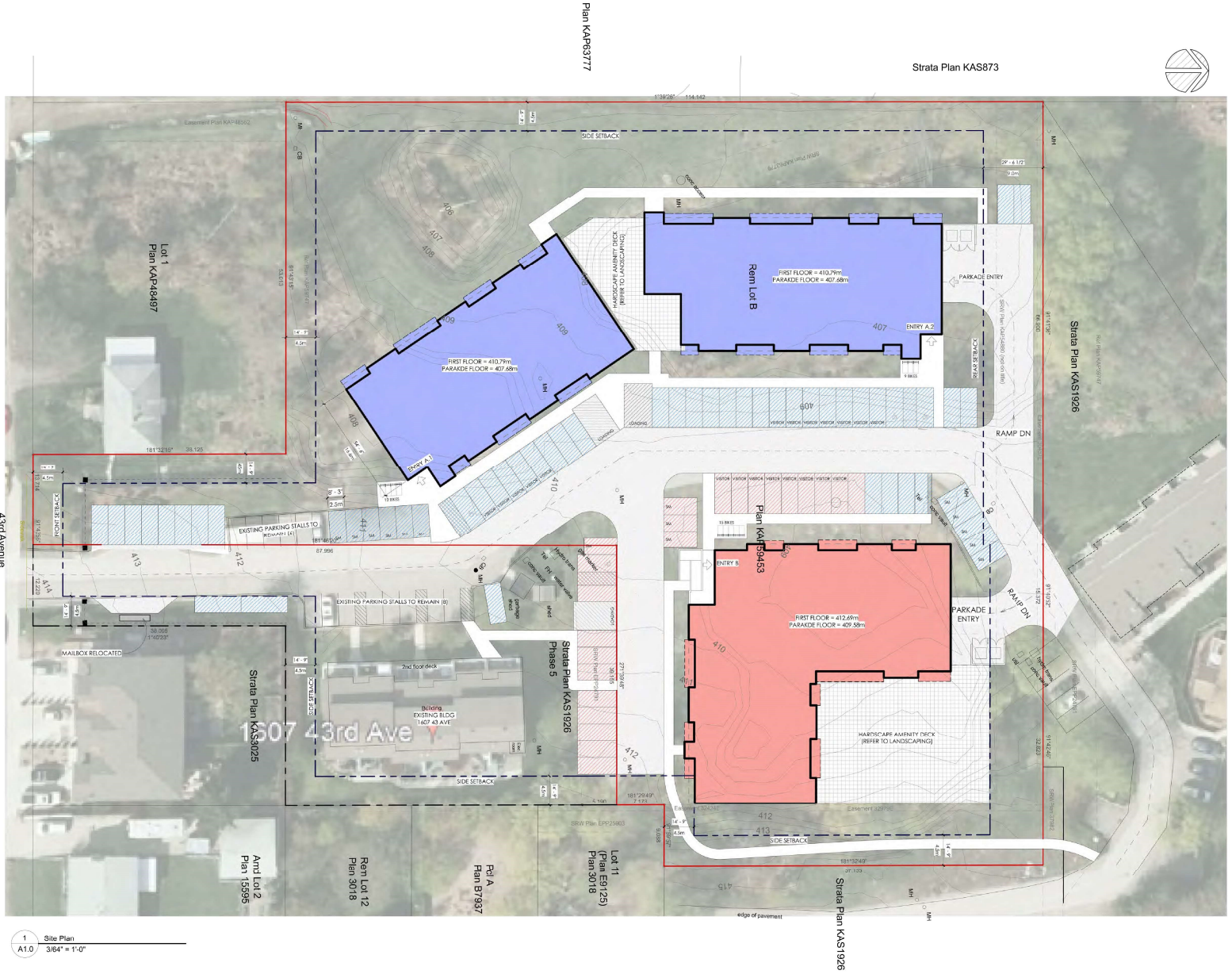


1	10/14/2023	DEVELOPMENT PERMIT REVIEW
2	06/08/23	DEVELOPMENT PERMIT REVIEW
3	02/24/23	DEVELOPMENT PERMIT REVIEW
4	11/20/22	DEVELOPMENT PERMIT REVIEW

NO DATE RECORD OF ISSUES
 Project: **VERNON SPRINGS**
 1607 43rd Ave.
 Vernon, BC

Sheet Title: **SIB PROJECTIONS**

Job Number: **19.763**
 Date: **November 24, 2023**
 City: **KIT.**
 Project Number:
 Drawing Number:



1 Site Plan
A1.0 3/84" = 1'-0"



Strata Plan KAS873

Plan KAS9377

Strata Plan KAS1926

Plan KAS1943

Strata Plan KAS1925

Lot 1
Plan KAS1917

43rd Avenue

1607 43rd Ave

4160 - 2010-5-15811
4170 - 2010-5-15748
4175 - 2010-5-15700
www.kamloops.ca

KAMLOOPS
 KELOWNA

1074805 - 1074805-0100
 Contact: Kamloops
 1074805-0100
 1074805-0100
 1074805-0100

1	NO	COMPLETION REQUIRED
2	NO	COMPLETION REQUIRED
3	NO	COMPLETION REQUIRED
4	NO	COMPLETION REQUIRED
5	NO	COMPLETION REQUIRED
6	NO	COMPLETION REQUIRED
7	NO	COMPLETION REQUIRED
8	NO	COMPLETION REQUIRED
9	NO	COMPLETION REQUIRED
10	NO	COMPLETION REQUIRED

VERNON SPRINGS
1607 43rd Ave.
Vernon BC

SITE PLAN

Scale: 3/84" = 1'-0"

Date: November 29, 2023

Drawn: J. [Name]

Revision Number: [Number]

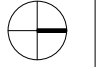
Project Number: [Number]

A1.0

NOT FOR CONSTRUCTION

**PROJECT STATUS
 ENTER HERE**

- THIS DRAWING MUST NOT BE SCALED.
 - VERIFY ALL DIMENSIONS AND BEARING PRIOR TO COMMENCEMENT OF WORK. REPORT ALL ERRORS AND OMISSIONS TO THE ARCHITECT.
 - VARIATIONS AND MODIFICATIONS ARE NOT ALLOWED WITHOUT WRITTEN PERMISSION FROM THE ARCHITECT.
 - THIS DRAWING IS THE EXCLUSIVE PROPERTY OF THE ARCHITECT.
 - ANY REPRODUCTION MUST BEAR THEIR NAME AS ARCHITECT.
 - THIS DOCUMENT HAS BEEN DIGITALLY CERTIFIED WITH DIGITAL CERTIFICATE AND ELECTRONIC SIGNATURE AND APPROVED BY THE ARCHITECTURAL BOARD OF PROFESSIONAL ENGINEERS AND ARCHITECTS. ANY REPRODUCTION OF THIS DOCUMENT MUST BE TRANSMITTED TO YOU IN DIGITAL FORM AND PRINTED VERSION CAN BE USED UPON AS A TRUE COPY OF THE ORIGINAL WHEN SUPPORTED BY THE PROFESSIONAL SEAL AND DIGITAL CERTIFICATE OF THIS PRINTED FROM THE DIGITALLY CERTIFIED ELECTRONIC FILE APPROVED BY THE ARCHITECT.



Scale

NO.	DATE	DESCRIPTION

RECORD OF ISSUES

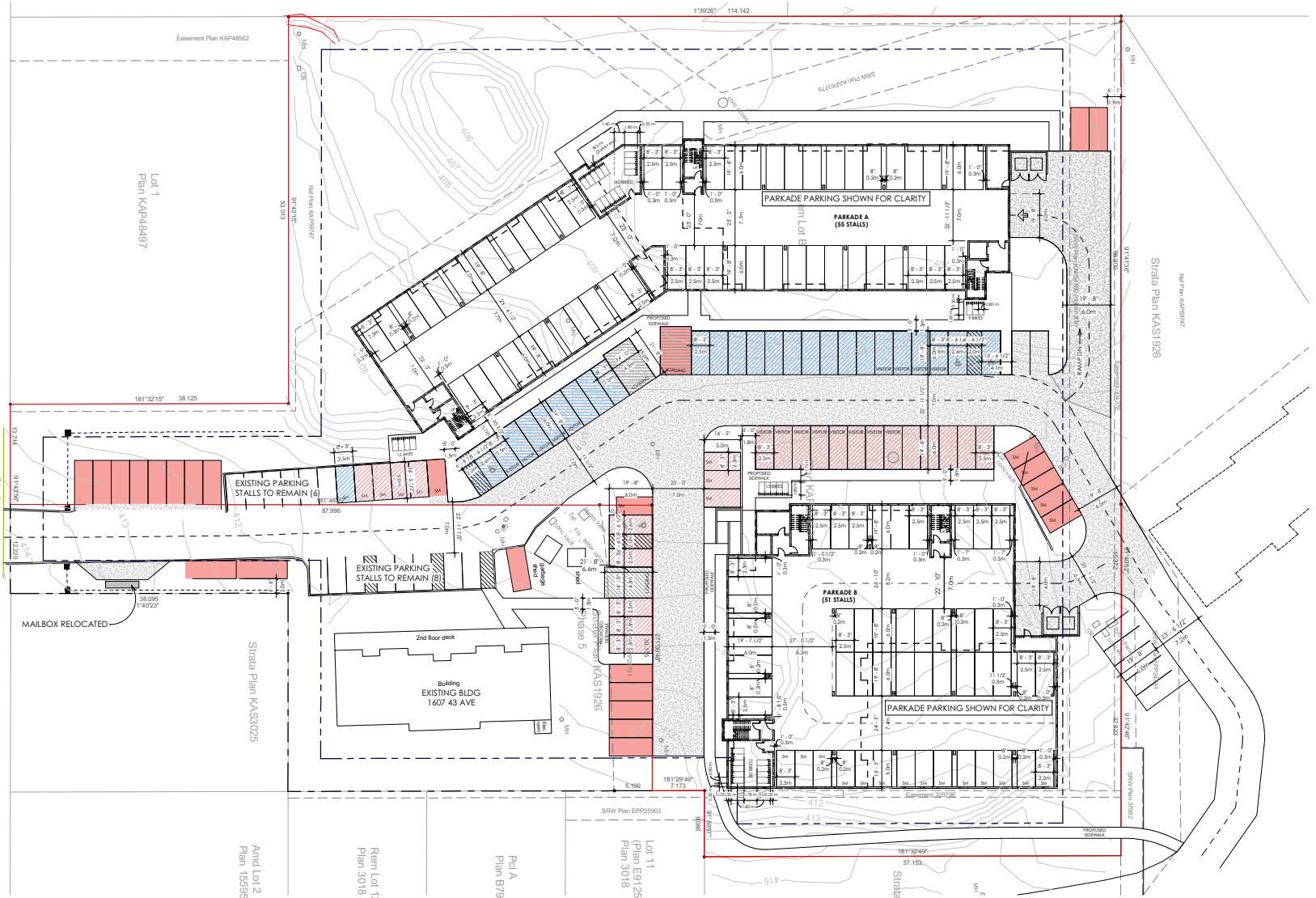
NO.	DATE	DESCRIPTION

RECORD OF REVISIONS

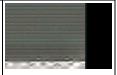
NO.	DATE	DESCRIPTION

SITE CIRCULATION / PARKING

Job Number	19.763
Date	2023.11.22
Scale	3/8" = 1'-0"
Revision Number	
Drawing Number	



1 Site Circulation/Parking
 A1.2 3/8" = 1'-0"



4100 - 12010 6 STREET
 KELOWNA, BC V1Y 4K4
 TEL: 250-863-3300
 www.kandbarchitects.com

K&B ARCHITECTS
 KELOWNA

DATE: 08/16/2021
 TIME: 10:00 AM
 PROJECT: BUILDING 'A' FARKADE FLOOR PLAN
 DRAWING NO: 20-01

THIS DRAWING IS THE PROPERTY OF K&B ARCHITECTS. IT IS TO BE USED ONLY FOR THE PROJECT AND SITE SPECIFICALLY IDENTIFIED HEREIN. NO PART OF THIS DRAWING IS TO BE REPRODUCED OR TRANSMITTED IN ANY FORM OR BY ANY MEANS, ELECTRONIC OR MECHANICAL, INCLUDING PHOTOCOPYING, RECORDING, OR BY ANY INFORMATION STORAGE AND RETRIEVAL SYSTEM, WITHOUT THE WRITTEN PERMISSION OF K&B ARCHITECTS.

DATE: 08/16/2021
 TIME: 10:00 AM
 PROJECT: BUILDING 'A' FARKADE FLOOR PLAN
 DRAWING NO: 20-01

CONTACT: K&B ARCHITECTS
 4100 - 12010 6 STREET
 KELOWNA, BC V1Y 4K4
 TEL: 250-863-3300
 FAX: 250-863-3302

DATE: 08/16/2021
 TIME: 10:00 AM
 PROJECT: BUILDING 'A' FARKADE FLOOR PLAN
 DRAWING NO: 20-01

DATE: 08/16/2021
 TIME: 10:00 AM
 PROJECT: BUILDING 'A' FARKADE FLOOR PLAN
 DRAWING NO: 20-01

DATE: 08/16/2021
 TIME: 10:00 AM
 PROJECT: BUILDING 'A' FARKADE FLOOR PLAN
 DRAWING NO: 20-01

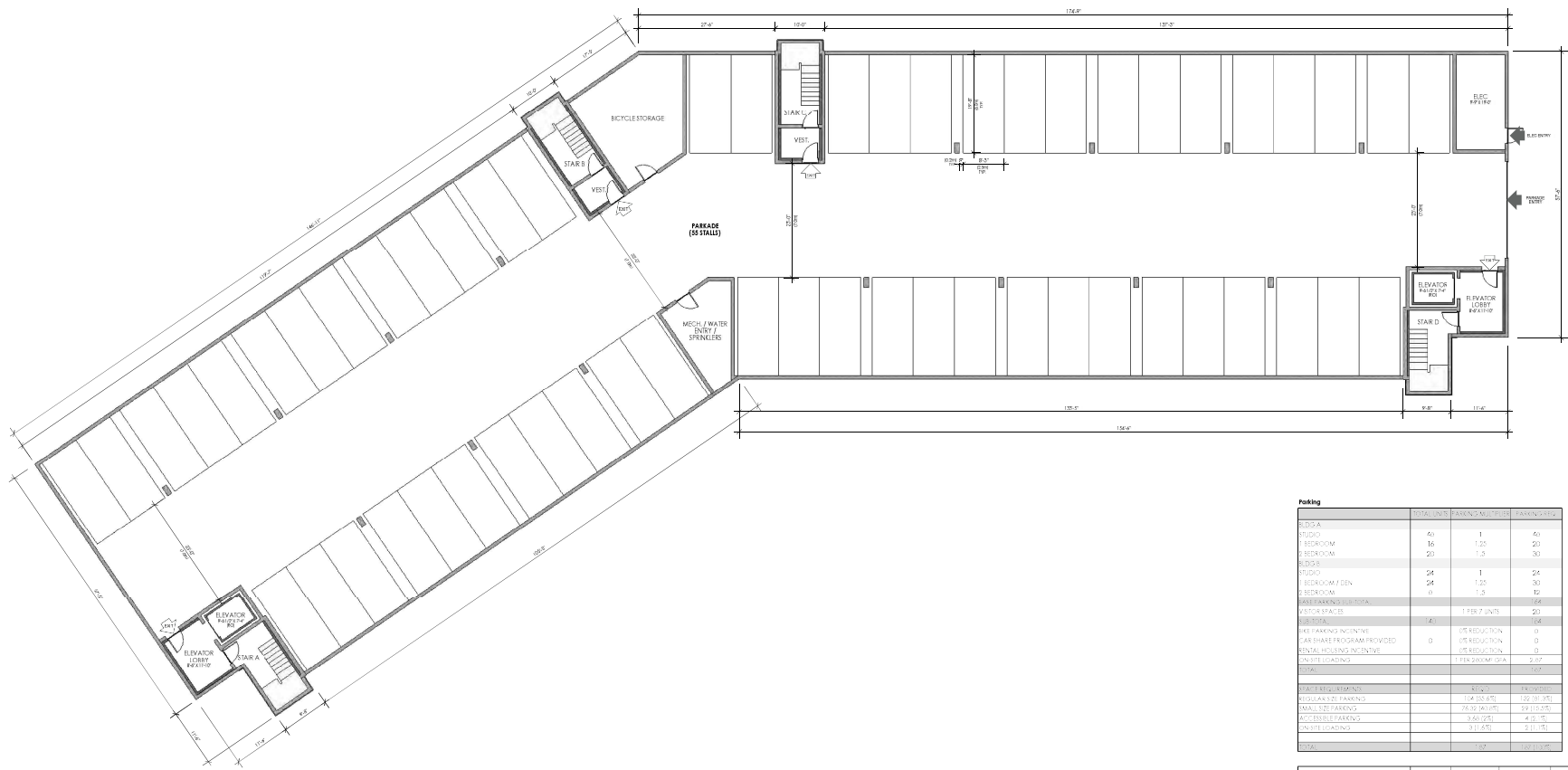
DATE: 08/16/2021
 TIME: 10:00 AM
 PROJECT: BUILDING 'A' FARKADE FLOOR PLAN
 DRAWING NO: 20-01

DATE: 08/16/2021
 TIME: 10:00 AM
 PROJECT: BUILDING 'A' FARKADE FLOOR PLAN
 DRAWING NO: 20-01

DATE: 08/16/2021
 TIME: 10:00 AM
 PROJECT: BUILDING 'A' FARKADE FLOOR PLAN
 DRAWING NO: 20-01

DATE: 08/16/2021
 TIME: 10:00 AM
 PROJECT: BUILDING 'A' FARKADE FLOOR PLAN
 DRAWING NO: 20-01

DATE: 08/16/2021
 TIME: 10:00 AM
 PROJECT: BUILDING 'A' FARKADE FLOOR PLAN
 DRAWING NO: 20-01



1 BUILDING 'A' FARKADE FLOOR PLAN
 3/32" = 1'-0"

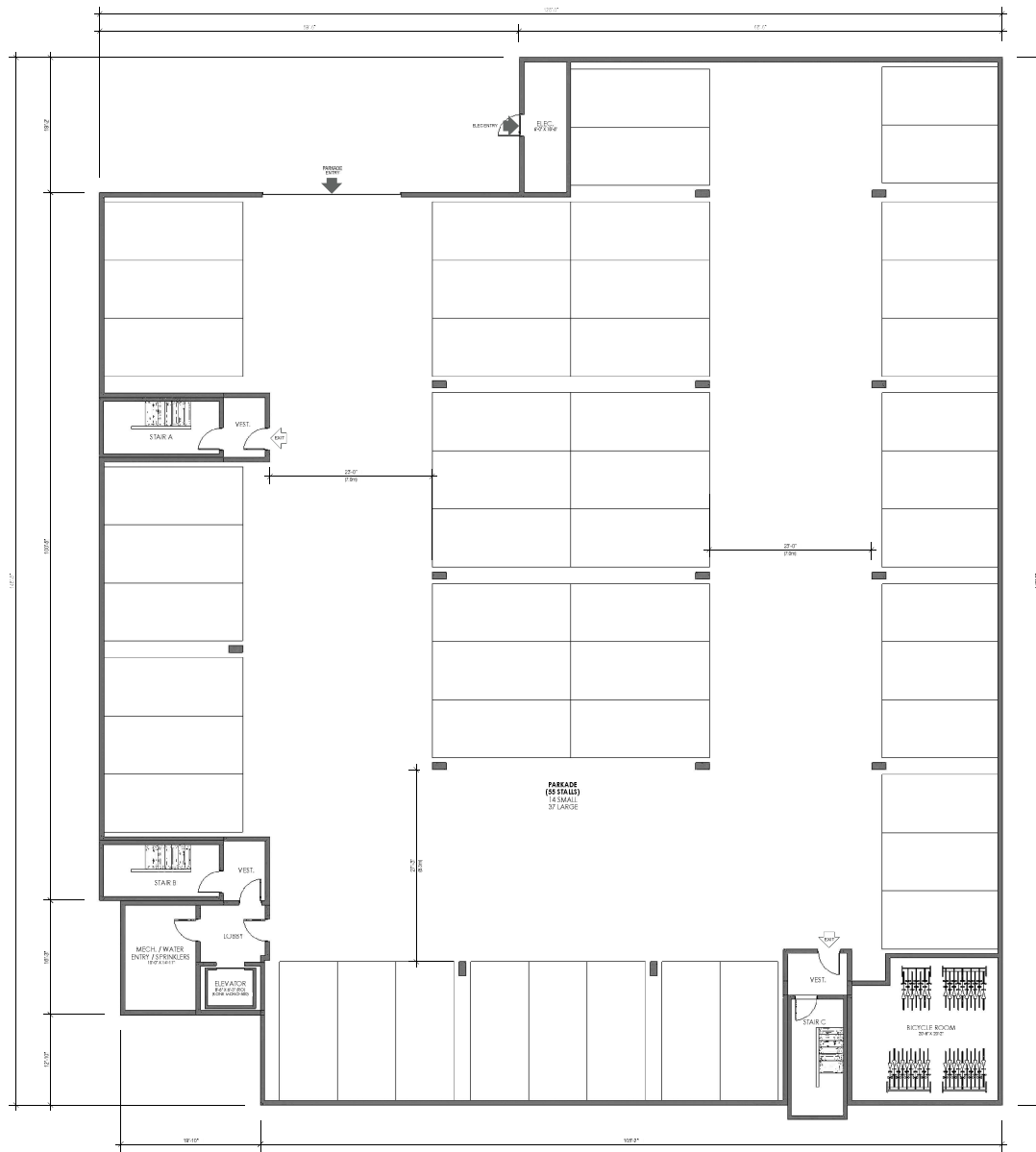
Parking	TOTAL UNITS	PARKING MULTIPLIER	PARKING REQ.
STUDIO	40	1	40
1 BEDROOM	16	1.25	20
2 BEDROOM	20	1.5	30
BURSU			
STUDIO	24	1	24
BEDROOM / DEN	24	1.25	30
2 BEDROOM	9	1.5	12
BASEPARKING SUBTOTAL			126
VISITOR SPACES	2	1 PER 7 UNITS	20
BURSU			14
BEE PARKING INCENTIVE	0	OR REDUCTION	0
PAR SHARE PROGRAM PROVIDED	0	OR REDUCTION	0
RENAL INCENTIVE INCENTIVE	0	OR REDUCTION	0
UNITS LOADING	1	1 OR 200MP GVA	2.07
TOTAL			167
AVAILABLE REMAINS	41		167
STANDARD PARKING	14	1.5 GVA	21
MANUAL PARKING	74.5	0.5 GVA	37.25
ACCESSIBLE PARKING	0.5	0.5 GVA	0.25
UNITS LOADING	1	1 OR 200MP GVA	2.07
TOTAL	86.5		60.52

EXISTING BLDG #1017 ABOVE	UNITS	PARKING MULTIPLIER	PARKING REQ.	PROVIDED
1 BR / 1 BEDROOM (OR MORE)	6	1.5	9	9
CARPORT		1 PER 7 UNITS	0.86	0.86
TOTAL			9.86	9.86

BICYCLE PARKING	TOTAL UNITS	MULTIPLIER	REQ.	PROVIDED
STUDIO				
CLASS - LONG TERM PARKING		0.5	40	40
CLASS - SHORT TERM PARKING	04	0.25	14	14
SUB-TOTAL			53	53
STUDIO				
CLASS - LONG TERM PARKING	26	0.5	16	16
CLASS - SHORT TERM PARKING		0.25	14	14
SUB-TOTAL			30	30
TOTAL			83	83

NOT FOR CONSTRUCTION

A2.0



1 BUILDING B PARKADE FLOOR PLAN
1/8" = 1'-0"

Parking	TOTAL UNITS	PARKING MULTIPLIER	PARKING LEVEL
STUDIO	40	1	40
BEDROOM	16	1.25	20
BEDROOM	20	1.5	30
BEDROOM	24	1	24
BEDROOM 7 DEN	24	1.25	30
BEDROOM	4	1.5	6
BASE PARKING SUBTOTAL			156
CUSTOM SPACES	2	1 PER 7 UNITS	20
BICYCLE			164
BEE PARKING INCENTIVE		OR REDUCTION	0
PAR SHARE PROGRAM PROVIDED	0	OR REDUCTION	0
RENAL INCENTIVE INCENTIVE		OR REDUCTION	0
CRATE LOADING	1.08 ZOOM/DVA		2.07
TOTAL			167
MINIMUM REQUIREMENTS	167		167
STUDIOS 25 PARKING	14 (15.4%)		15
QUALITY PARKING	74.5% (45.0%)		42
ACCESSIBLE PARKING	3.56 (2%)		4
CRATE LOADING	2 (1.2%)		2
TOTAL	167		167

EXISTING BIDD FIRST BRAYE	UNITS	MULTIPLIER	PARKING LEVEL	PROVIDED
BEE PARKING INCENTIVE	0	1.5	0	0
PAR SHARE PROGRAM PROVIDED	0	1 PER 7 UNITS	0	0
TOTAL			13	14

BICYCLE PARKING	TOTAL UNITS	MULTIPLIER	LEVEL	PROVIDED
CLASS - LONG TERM PARKING	0	0.5	40	40
CLASS II - SHORT TERM PARKING	0	0.25	24	24
CLASS TOTAL			63	63
CLASS - LONG TERM PARKING	26	0.5	36	31
CLASS II - SHORT TERM PARKING	0	0.25	16	10
CLASS TOTAL			45	40
TOTAL				103

NOT FOR CONSTRUCTION

4100 - 12010 - 157883
417 PARK DR. VERNON
BC V2N 4S1Y0

www.kameocops.com

KAMEOCOPS
KELOWNA

1274747830 - 12010 - 157883
00000001

Contact: Kameocops
1274747830 - 12010 - 157883
1274747830 - 12010 - 157883
1274747830 - 12010 - 157883

VERNON SPRINGS
1687 42nd Ave.
Vernon BC

BUILDING 'B' BASEMENT PLAN

DATE: 08/16/21
DATE: November 24, 2021
SCALE: 3/32" = 1'-0"
PROJECT NUMBER:
DRAWING NUMBER:

A2.10



1 BUILDING A1 EAST (FRONT) ELEVATION
1/8" = 1'-0"



2 BUILDING A1 NORTH (SIDE) ELEVATION
1/8" = 1'-0"

MATERIALS LEGEND

- 1 MATERIAL: CERAMIC TILE (GLAZED FINISH)
STYLE: EDWIGHT BOLD / FACED
COLOR: CHAMEL / WHITE WOOD / IRON GRAY (OR APPROVED EQUAL)
- 2 MATERIAL: CEMENT FIBRE BOARD AND BATT
STEEL: ANCHOR PANEL, BATT AL / 2" X 4"
COLOR: CHAMEL / WHITE WOOD / IRON GRAY (OR APPROVED EQUAL)
- 3 MATERIAL: CEMENT FIBRE BOARD AND BATT
STEEL: ANCHOR PANEL, BATT AL / 2" X 4"
COLOR: CHAMEL / WHITE WOOD / IRON GRAY (OR APPROVED EQUAL)
- 4 MATERIAL: WESTERN METALS (OR APPROVED EQUAL)
STEEL: WESTERN BLACK / APPROVED EQUAL
COLOR: WESTERN BLACK (OR APPROVED EQUAL)
- 5 MATERIAL: WESTERN METALS (OR APPROVED EQUAL)
STEEL: AC / WESTERN BALANCE / OR APPROVED EQUAL
COLOR: CHARACTAL / GREY
- 6 MATERIAL: CEMENT FIBRE BOARD
STEEL: ANCHOR PANEL, BATT AL / 2" X 4"
COLOR: CHAMEL / WHITE WOOD / IRON GRAY (OR APPROVED EQUAL)
- 7 MATERIAL: CEMENT FIBRE BOARD
STEEL: ANCHOR PANEL, BATT AL / 2" X 4"
COLOR: CHAMEL / WHITE WOOD / IRON GRAY (OR APPROVED EQUAL)
- 8 MATERIAL: CEMENT FIBRE BOARD
STEEL: ANCHOR PANEL, BATT AL / 2" X 4"
COLOR: CHAMEL / WHITE WOOD / IRON GRAY (OR APPROVED EQUAL)
- 9 MATERIAL: VINYL WINDOW FRAMES
STEEL: CONCRETE / ALUMINUM
GLASS: CLEAR
- 10 MATERIAL: ALUMINUM TRIMMER
COLOR: BLACK
GLASS: CLEAR
- 11 MATERIAL: FIBRE METAL SLAB ASSEMBLY
STEEL: WESTERN BLACK / APPROVED EQUAL
COLOR: BLACK
- 12 MATERIAL: PLATE GLASS WITH DOWNGUTS
STEEL: WESTERN BLACK / APPROVED EQUAL
COLOR: BLACK
- 13 MATERIAL: FIBRE METAL SLAB ASSEMBLY
STEEL: WESTERN BLACK / APPROVED EQUAL
COLOR: BLACK
- 14 MATERIAL: VINYL DETERMINING
STEEL: WESTERN BLACK / APPROVED EQUAL
COLOR: CONCRETE / SAND
- 15 MATERIAL: ARCHITECTURAL IMPRESSED CONCRETE
COLOR: TINTED MEDIUM GREY
- 16 MATERIAL: METAL VINYL
COLOR: MATCH (1) / TRIM / COLOUR
- 17 MATERIAL: STEEL COLUMN WITH NO CROSS BRACE
COLOR: BLACK / TOWER COURTESY
- 18 MATERIAL: STEEL CABLE VINYL
COLOR: BLACK

4100 - 120th STREET
SUITE 100 - 1007
VANCOUVER, BC V6V 2G6
TEL: (604) 687-3777
WWW.KAMBOODPS.COM

KAMBOODPS
KELOWNA

DATE: 11/22/2024
PROJECT: VERNON SPRINGS
DRAWN BY: J. HUI
CHECKED BY: M. HUI
SCALE: 1/8" = 1'-0"

VERNON SPRINGS
1887 4th Ave.
Vernon, BC

SHEET: BUILDING A1 EAST & NORTH ELEVATIONS

PROJECT NUMBER: 18/161
DATE: November 24, 2023
SCALE: 1/8" = 1'-0"
SHEET NUMBER: 1
SHEET TOTAL: 3

NOT FOR CONSTRUCTION

A3.0



1 BUILDING A1 WEST (REAR) ELEVATION
1/8" = 1'-0"



2 BUILDING A1 SOUTH (SIDE) ELEVATION
1/8" = 1'-0"

MATERIALS LEGEND

①	MATERIAL: CEMENT FIBRE BOARD SIDING STEEL FRAMING / TRUSS PANEL COLOR: GRAY / WHITE / RALPH KAMIS / IRON GRAY (OR APPROVED SIMILAR)
②	MATERIAL: CEMENT FIBRE BOARD AND BRICK STEEL FRAMING / TRUSS PANEL COLOR: GRAY / WHITE / RALPH KAMIS / IRON GRAY (OR APPROVED SIMILAR)
③	MATERIAL: CEMENT FIBRE BOARD AND BRICK STEEL FRAMING / TRUSS PANEL COLOR: GRAY / WHITE / RALPH KAMIS / IRON GRAY (OR APPROVED SIMILAR)
④	MATERIAL: WESTERN METAL (OR APPROVED SIMILAR) STEEL FRAMING / TRUSS PANEL COLOR: WESTERN BLACK (OR APPROVED SIMILAR)
⑤	MATERIAL: ASPHALT SIDING STEEL FRAMING / TRUSS PANEL COLOR: CHARCOAL / GREY
⑥	MATERIAL: CEMENT FIBRE BOARD STEEL FRAMING / TRUSS PANEL COLOR: GRAY / WHITE / RALPH KAMIS / IRON GRAY (OR APPROVED SIMILAR)
⑦	MATERIAL: CEMENT FIBRE BOARD STEEL FRAMING / TRUSS PANEL COLOR: GRAY / WHITE / RALPH KAMIS / IRON GRAY (OR APPROVED SIMILAR)
⑧	MATERIAL: CEMENT FIBRE BOARD STEEL FRAMING / TRUSS PANEL COLOR: GRAY / WHITE / RALPH KAMIS / IRON GRAY (OR APPROVED SIMILAR)
⑨	MATERIAL: VINYL WINDOW FRAMES STEEL WINDOW ASSEMBLY GLAZING: CLEAR
⑩	MATERIAL: VINYL WINDOW FRAMES STEEL WINDOW ASSEMBLY GLAZING: CLEAR
⑪	MATERIAL: FINE FINISH METAL SLAB ASSEMBLY STEEL WINDOW ASSEMBLY COLOR: BLACK
⑫	MATERIAL: LAMINATE CLUTTER WITH DOWNGUTS STEEL WINDOW ASSEMBLY COLOR: BLACK
⑬	MATERIAL: FINE FINISH METAL SLAB ASSEMBLY STEEL WINDOW ASSEMBLY COLOR: BLACK
⑭	MATERIAL: VINYL DETAIL MOUNTING STEEL WINDOW ASSEMBLY COLOR: WHITE / CONCRETE / SAND
⑮	MATERIAL: ARCHITECTURAL EXPOSED CONCRETE COLOR: TINTED MEDIUM GREY
⑯	MATERIAL: METAL VINYL COLOR: MATCH (1) / TRUSS COLOR
⑰	MATERIAL: STEEL COLUMN WITH NO CROSS BRACE COLOR: BLACK / TOWER CLASH
⑱	MATERIAL: STEEL CABLE VINYL COLOR: BLACK

4500 10TH STREET
KITIMATI, ONTARIO
L0N 4G0

www.kimco.ca

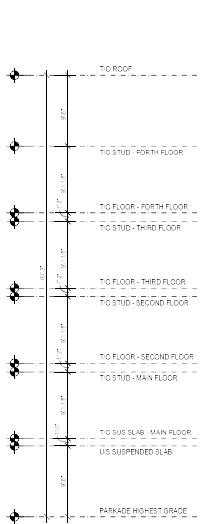
RAMBOLD
KELLOWNA

DATE: 2023-07-24
PROJECT: VERNON SPRINGS
ELEVATION: BUILDING A1 WEST & SOUTH ELEVATIONS
SCALE: 1/8" = 1'-0"

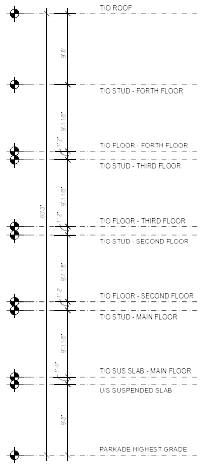
VERNON SPRINGS
1687 4th Ave.
Vernon, BC

Project Number: 89,761
Date: November 24, 2023
Scale: 1/8" = 1'-0"
Revision Number:
Revision Description:

NOT FOR CONSTRUCTION **A3.1**



1 BUILDING A-2 WEST (REAR) ELEVATION
1/8" = 1'-0"



2 BUILDING A-1 SOUTH (SIDE) ELEVATION
1/8" = 1'-0"

MATERIALS LEGEND

- 1 MATERIAL CEMENT FIBRE BOARD (SINKED)
STYL: FRASER / TONY PANEL
COLOR: AMES HAZEL / IRON GRAY (OR APPROVED SIMILAR)
- 2 MATERIAL CEMENT FIBRE BOARD AND BATT
STYL: FRASER / TONY PANEL
COLOR: AMES HAZEL / IRON GRAY (OR APPROVED SIMILAR)
- 3 MATERIAL CEMENT FIBRE BOARD AND BATT
STYL: FRASER / TONY PANEL
COLOR: AMES HAZEL / IRON GRAY (OR APPROVED SIMILAR)
- 4 MATERIAL WESTERN METAL (OR APPROVED SIMILAR)
STYL: WESTERN BLACK (OR APPROVED SIMILAR)
COLOR: WESTERN BLACK (OR APPROVED SIMILAR)
- 5 MATERIAL WESTERN METAL (OR APPROVED SIMILAR)
STYL: WESTERN BLACK (OR APPROVED SIMILAR)
COLOR: WESTERN BLACK (OR APPROVED SIMILAR)
- 6 MATERIAL WESTERN METAL (OR APPROVED SIMILAR)
STYL: WESTERN BLACK (OR APPROVED SIMILAR)
COLOR: WESTERN BLACK (OR APPROVED SIMILAR)
- 7 MATERIAL CEMENT FIBRE BOARD
STYL: FRASER / TONY PANEL
COLOR: AMES HAZEL / IRON GRAY (OR APPROVED SIMILAR)
- 8 MATERIAL CEMENT FIBRE BOARD
STYL: FRASER / TONY PANEL
COLOR: AMES HAZEL / IRON GRAY (OR APPROVED SIMILAR)
- 9 MATERIAL VINYL WINDOW FRAMES
STYL: CONCRETE / ALUMINUM
COLOR: BLACK
- 10 MATERIAL VINYL WINDOW FRAMES
STYL: CONCRETE / ALUMINUM
COLOR: BLACK
- 11 MATERIAL FINE FINISH METAL SLATS ASSEMBLY
STYL: FRASER / TONY PANEL
COLOR: BLACK
- 12 MATERIAL LAMINATE GLASS WITH DOWNRAIGNS
STYL: FRASER / TONY PANEL
COLOR: BLACK
- 13 MATERIAL FINE FINISH METAL SLATS ASSEMBLY
STYL: FRASER / TONY PANEL
COLOR: BLACK
- 14 MATERIAL VINYL DECOR IMPASSING
STYL: WESTERN BLACK (OR APPROVED SIMILAR)
COLOR: CONCRETE / IRON GRAY
- 15 MATERIAL ARCHITECTURAL IMPASSING
STYL: WESTERN BLACK (OR APPROVED SIMILAR)
COLOR: CONCRETE / IRON GRAY
- 16 MATERIAL METAL VINYL
COLOR: WESTERN BLACK (OR APPROVED SIMILAR)
- 17 MATERIAL STEEL BEAM COLUMN WITH NO CROSS BRACE
COLOR: BLACK (OR APPROVED SIMILAR)
- 18 MATERIAL STEEL BEAM COLUMN WITH NO CROSS BRACE
COLOR: BLACK (OR APPROVED SIMILAR)

VERNON SPRINGS
1687 43rd Ave.
Vernon, BC

VERNON SPRINGS
1687 43rd Ave.
Vernon, BC

DATE: 11/24/2023
SCALE: 1/8" = 1'-0"
PROJECT NUMBER: 19-061
DATE: 11/24/2023
PROJECT NUMBER: 19-061

NOT FOR CONSTRUCTION

A3.2



1 BUILDING A.2 WEST (REAR) ELEVATION
1/8" = 1'-0"



2 BUILDING A.2 SOUTH (SIDE) ELEVATION
1/8" = 1'-0"

MATERIALS LEGEND

- 1 MATERIAL CEMENT FIBRE BOARD SKIN/CLAD
STEEL FRAMING/STUDS/PANES
COLOR: GRAY/WHITE/BLACK/IRON GRAY (OR APPROVED SIMILAR)
- 2 MATERIAL CEMENT FIBRE BOARD AND BATT
STEEL FRAMING/PANES/BATT/STUDS
COLOR: GRAY/WHITE/BLACK/IRON GRAY (OR APPROVED SIMILAR)
- 3 MATERIAL CEMENT FIBRE BOARD AND BATT
STEEL FRAMING/PANES/BATT/STUDS
COLOR: GRAY/WHITE/BLACK/IRON GRAY (OR APPROVED SIMILAR)
- 4 MATERIAL WESTERN METAL (OR APPROVED SIMILAR)
STEEL FRAMING/STUDS/PANES
COLOR: WESTERN BLACK (OR APPROVED SIMILAR)
- 5 MATERIAL ASPHALT/SHINGLES
STEEL/ALU/STEEL/BLACK/SHINGLES (OR APPROVED SIMILAR)
COLOR: CHARCOAL/GRAY
- 6 MATERIAL CEMENT FIBRE BOARD
STEEL FRAMING/STUDS
COLOR: WOOD/STEEL COLOR TO MATCH WINDOW TRIM
- 7 MATERIAL CEMENT FIBRE BOARD
STEEL FRAMING/STUDS
COLOR: GRAY/WHITE/BLACK/IRON GRAY (OR APPROVED SIMILAR)
- 8 MATERIAL CEMENT FIBRE BOARD
STEEL FRAMING/STUDS
COLOR: GRAY/WHITE/BLACK/IRON GRAY (OR APPROVED SIMILAR)
- 9 MATERIAL VINYL WINDOW FRAMES
STEEL/ALUMINUM/CLADMENT
GLAZING: CLEAR
- 10 MATERIAL ALUMINUM DIVIDERS
COLOR: BLACK
GLAZING: CLEAR
- 11 MATERIAL FIBRE REINFORCED PLASTIC SKIN/ASSEMBLY
STEEL FRAMING/PANES/MOUNTING DEVICES
COLOR: BLACK
- 12 MATERIAL PLATE GLASS WITH DOWNDRAUGHTS
STEEL/ALUMINUM/FRAMING
COLOR: BLACK
- 13 MATERIAL INSULATED WOOD/SOFTWOOD/SOFTS
STEEL/ALUMINUM/FRAMING/STUDS
COLOR: BLACK
- 14 MATERIAL VINYL DECORATIVE TRIM
STEEL/ALUMINUM/FRAMING (OR APPROVED SIMILAR)
COLOR: WHITE/CONCRETE/GRAND
- 15 MATERIAL ARCHITECTURAL ENCASED CONCRETE
COLOR: TINTED MEDIUM GREY
- 16 MATERIAL METAL VINYL
COLOR: MATCH (1) TRIM COLOR
- 17 MATERIAL STEEL COLUMN WITH NO CROSS BRACE
COLOR: BLACK/TOWER CLASSE
- 18 MATERIAL ALU/STEEL CABLE VENT
COLOR: BLACK

4100 - 100th STREET
SUITE 100, WILLOW GROVE
IL 60090

www.parkgrouparchitect.com

RAMBOLDS
KELOWNA

DATE: 11/24/2021

PROJECT: VERNON SPRINGS

CLIENT: VERNON SPRINGS

1687 4th Ave.
Vernon, BC

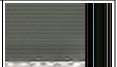
PROJECT: BUILDING A.2 WEST & SOUTH ELEVATIONS

DATE: 11/24/2021

SCALE: 1/8" = 1'-0"

PROJECT NUMBER: A3.3

NOT FOR CONSTRUCTION



4110 - 12101-15 STREET
 10170048-02-117-004
 11-20-43-1030

www.kiwiappreciation.com
 KANAMOODS
 KELOWNA

12745072-10000010-010010-00000000
 Contact: Ryan Heffner
 1016710000-000000-000000-000000-000000
 1016710000-000000-000000-000000-000000
 1016710000-000000-000000-000000-000000

1016710000-000000-000000-000000-000000
 Contact: Ryan Heffner
 1016710000-000000-000000-000000-000000
 1016710000-000000-000000-000000-000000
 1016710000-000000-000000-000000-000000

1016710000-000000-000000-000000-000000
 Contact: Ryan Heffner
 1016710000-000000-000000-000000-000000
 1016710000-000000-000000-000000-000000
 1016710000-000000-000000-000000-000000

1016710000-000000-000000-000000-000000
 Contact: Ryan Heffner
 1016710000-000000-000000-000000-000000
 1016710000-000000-000000-000000-000000
 1016710000-000000-000000-000000-000000

1016710000-000000-000000-000000-000000
 Contact: Ryan Heffner
 1016710000-000000-000000-000000-000000
 1016710000-000000-000000-000000-000000
 1016710000-000000-000000-000000-000000

1016710000-000000-000000-000000-000000
 Contact: Ryan Heffner
 1016710000-000000-000000-000000-000000
 1016710000-000000-000000-000000-000000
 1016710000-000000-000000-000000-000000

1016710000-000000-000000-000000-000000
 Contact: Ryan Heffner
 1016710000-000000-000000-000000-000000
 1016710000-000000-000000-000000-000000
 1016710000-000000-000000-000000-000000

1016710000-000000-000000-000000-000000
 Contact: Ryan Heffner
 1016710000-000000-000000-000000-000000
 1016710000-000000-000000-000000-000000
 1016710000-000000-000000-000000-000000

1016710000-000000-000000-000000-000000
 Contact: Ryan Heffner
 1016710000-000000-000000-000000-000000
 1016710000-000000-000000-000000-000000
 1016710000-000000-000000-000000-000000