

Social Issues & United Way in Your Community

City of Vernon

Jeanne Legua, *Government & Stakeholder Relations Specialist*
Tracy Anderson, *Regional CII Coordinator*

December 12, 2022



United Way
British Columbia

Working with communities in BC's
Interior, Lower Mainland, Central
& Northern Vancouver Island

United Way British Columbia (UWBC) acknowledges the homelands of the Indigenous Peoples of this place we now call British Columbia, and honours the many territorial keepers of the Lands on which we work.



United Way
British Columbia

Working with communities in BC's
Interior, Lower Mainland, Central
& Northern Vancouver Island

United Way BC – *Provincial in Scope, Local in Focus*



Listening to your community
- convening & collaborating
on solutions

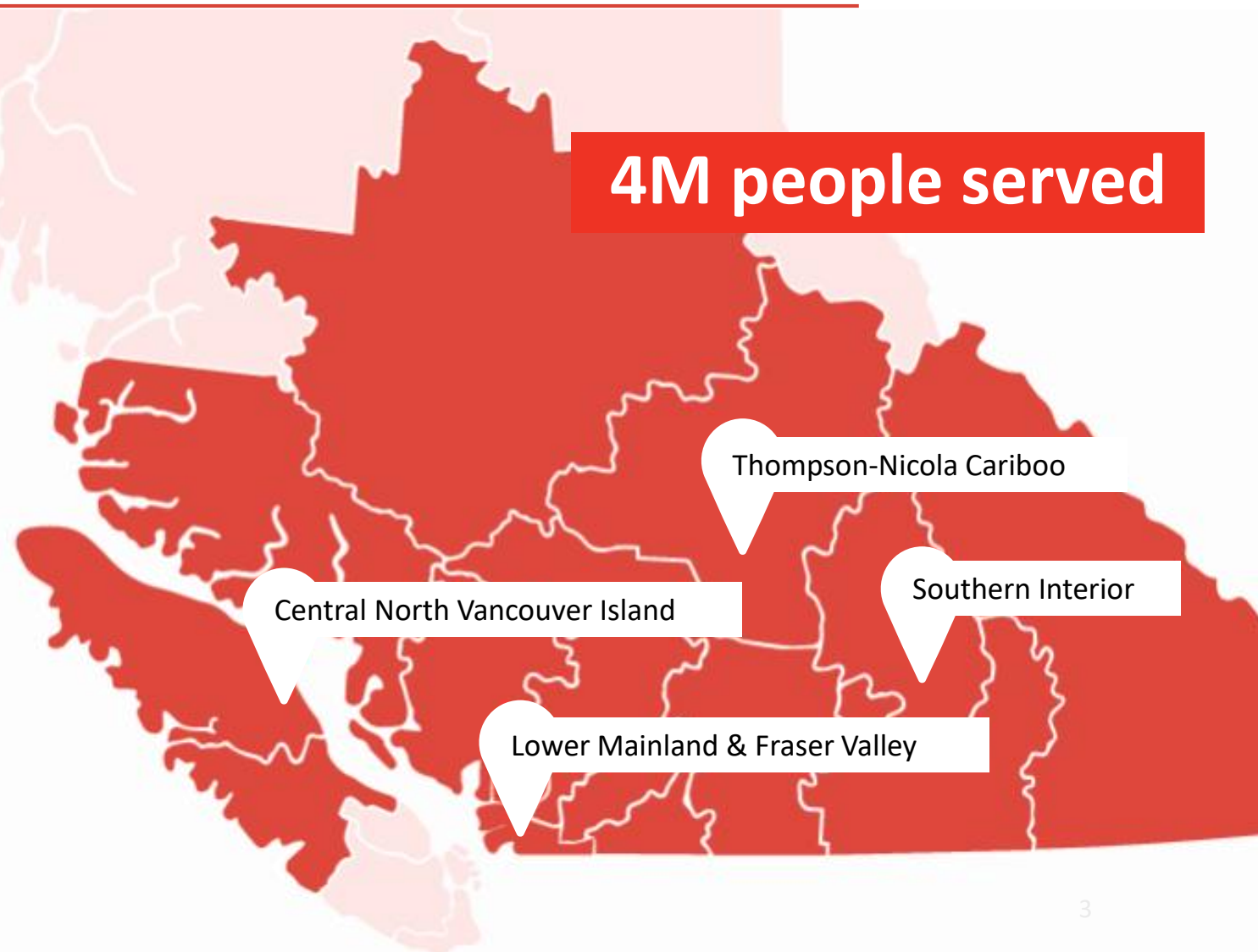


Learning from other
communities and testing
practical solutions



Forging strategic partnerships
with government, donors &
community partners

4M people served



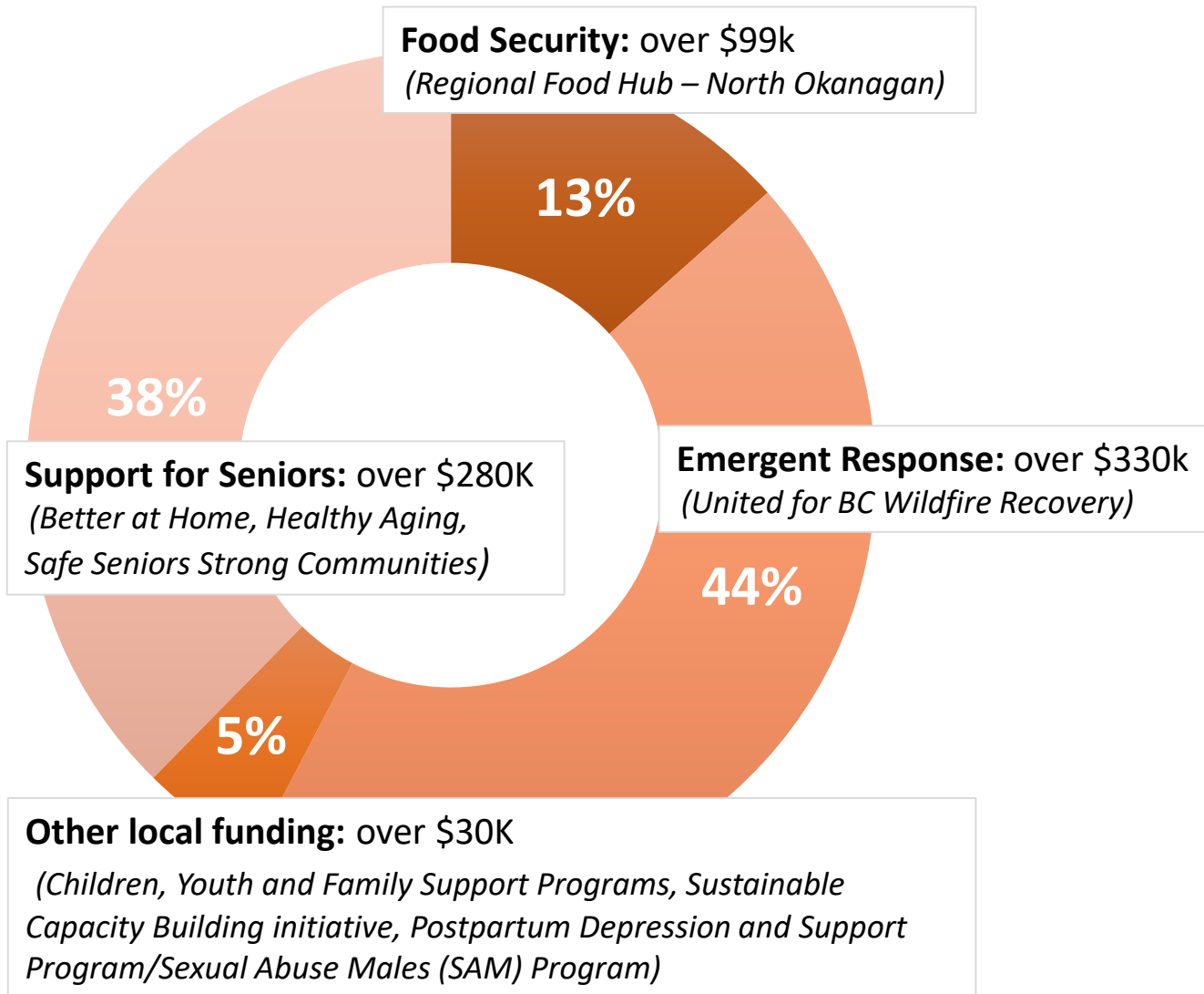
Challenges faced by communities in BC

1. Lack of access to basic needs & effects of inflation
2. Rising cost of housing
3. Increased demand on critical social community services
4. Need for rapid & coordinated response to emergencies



United Way's Impact - *City of Vernon*

= over \$740K



Partners:

1. Boys & Girls Club Okanagan
2. Community Dental Access Centre (North Okanagan) Society (CDAC)
3. Family Resource Centre Society for the North Okanagan
4. Independent Living Vernon
5. Nexus BC Community Resource Centre & Whitevalley Community Resource Centre
6. North Okanagan Friendship Society
7. North Okanagan Literacy Society
8. Okanagan Indian Band
9. School District #22 Vernon

Engagement Table: Social Planning Council



United Way
British Columbia

Working with communities in BC's
Interior, Lower Mainland, Central
& Northern Vancouver Island



United Way
501 N. Delaware

1000
2000
3000

Thank you!

Questions?

Jeanne Legua | JeanneL@uwbc.ca

Tracy Anderson | TracyA@uwbc.ca

For other inquiries, contact our team at GR@uwbc.ca



United Way
British Columbia

Working with communities in BC's
Interior, Lower Mainland, Central
& Northern Vancouver Island